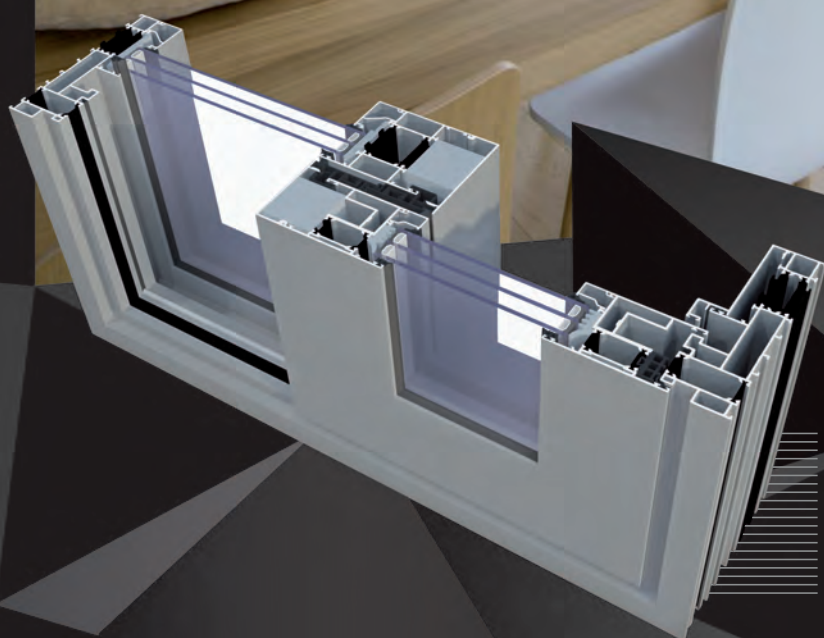


MONORAIL

MONORAIL



Monorail – option of the Ultraglide system. At least one fixed component (glazing) in the structure is the characteristic feature of the system. A system featuring improved thermal performance, used to design sliding and lift-sliding structures.

MONORAIL

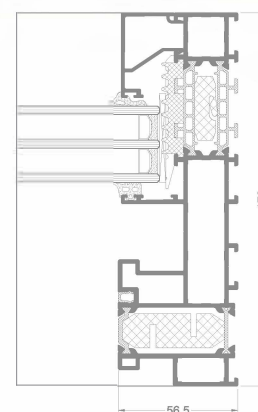
Monorail – option of the Ultraglide system. At least one fixed component (glazing) in the structure is the characteristic feature of the system. A special structure of the frame makes it possible to increase the clear opening relative to the fixed component. The system features improved thermal performance.

Characteristics of construction:

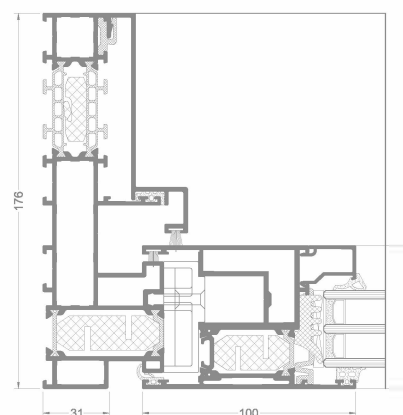
- maximum leaf weight: 400 kg
- single-rail frame
- possible structure variants:
 - 2-component (sash + fix)
 - 3-component (sash + fix + sash)
 - 4-component (2 sashes + 2 fixes)
- optional to use glazing from the outside, which makes it possible to use large-size, heavy infills

There is possibility of use Flyscreen system (Flyscreen – fly screens are a practical and an extremely functional protection against insects).

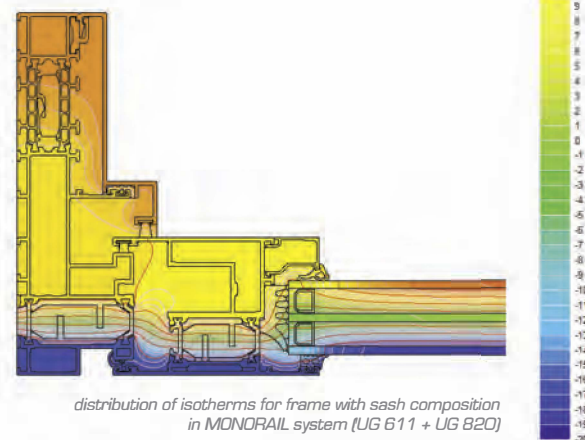
A wide range of colours available - RAL palette, structural colours, Aliplast Wood Colour Effect, bi-colour.



MONORAIL cross section



MONORAIL cross section



distribution of isotherms for frame with sash composition in MONORAIL system (UG 611 + UG 820)

TECHNICAL SPECIFICATION

SYSTEM	MATERIAL	DEPTH OF FRAME	DEPTH OF LEAF	GLAZING RANGE	WEIGHT OF LEAF	TYPE OF DOORS
MONORAIL	aluminium / thermal insulation	176 mm	67 mm	leaf 14-52 mm fix 12-72 mm	to 250 kg (sliding option) / to 400 kg (lift-sliding option)	sliding, lift-sliding

PERFORMANCE

SYSTEM	THERMAL INSULATION Uf *	AIR PERMEABILITY	WINDLOAD RESISTANCE	WATERTIGHTNESS
MONORAIL	Uf from 0,93 W/m ² K	Class 4; EN 12207	C4 (1600 Pa); EN 12210	9A (600 Pa); EN 12208

* Thermal insulation is dependent on a combination of profiles and thickness of the filling.